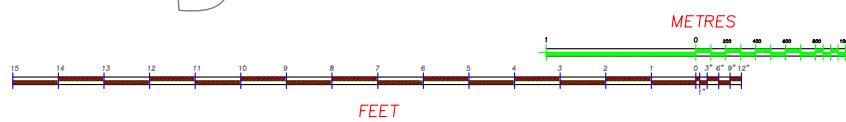
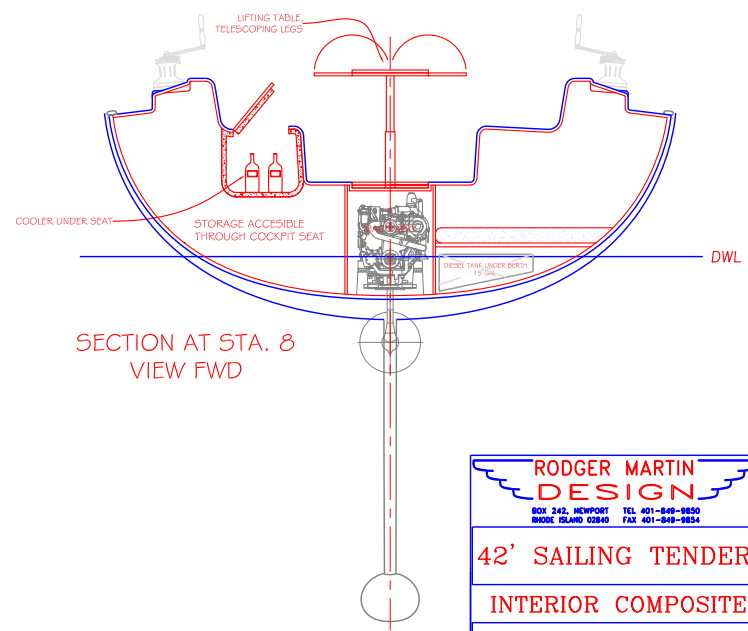
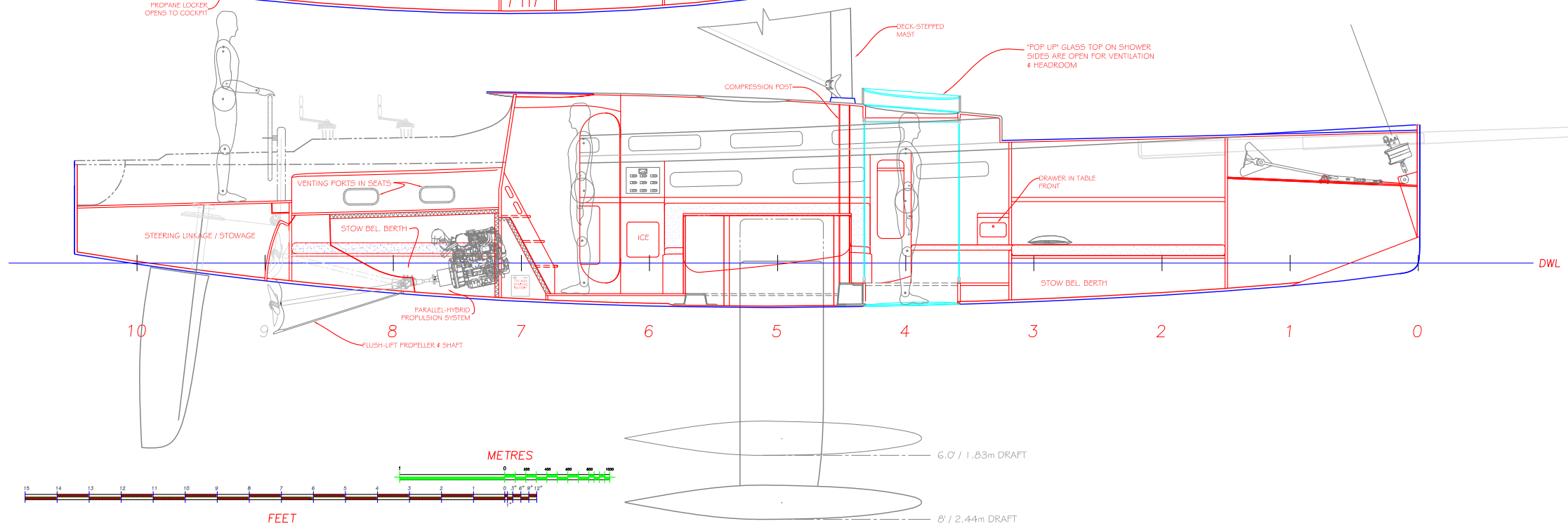
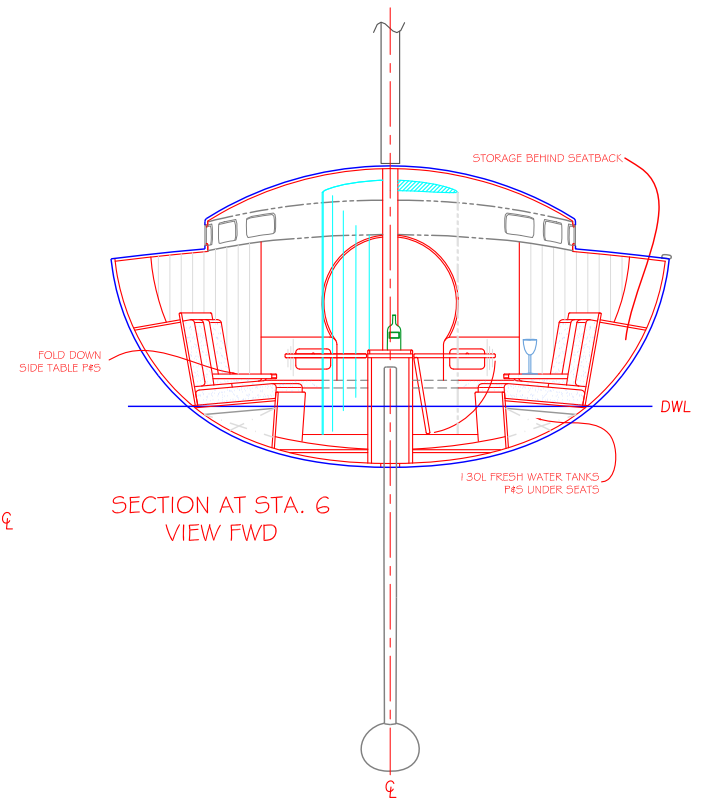
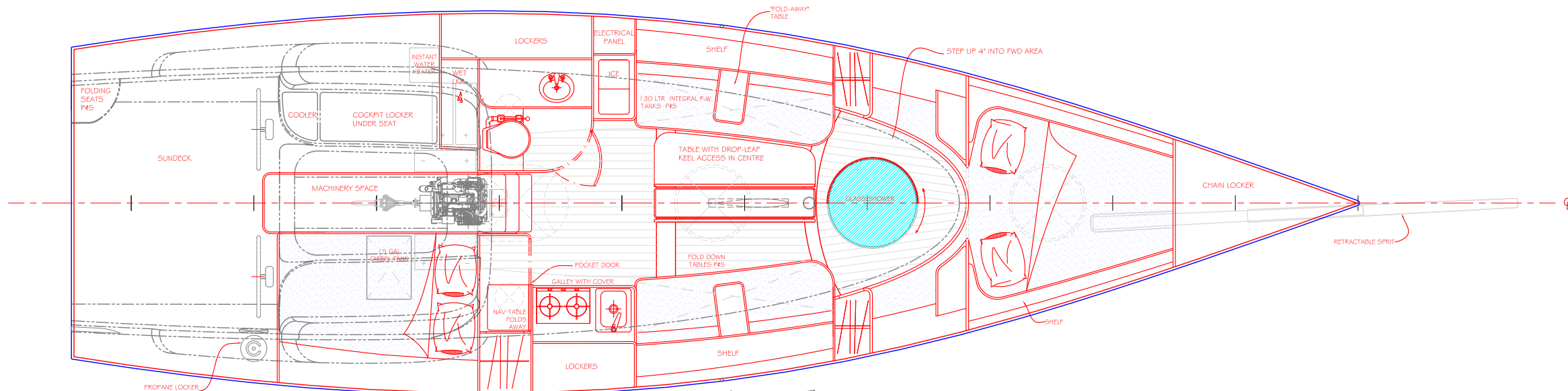
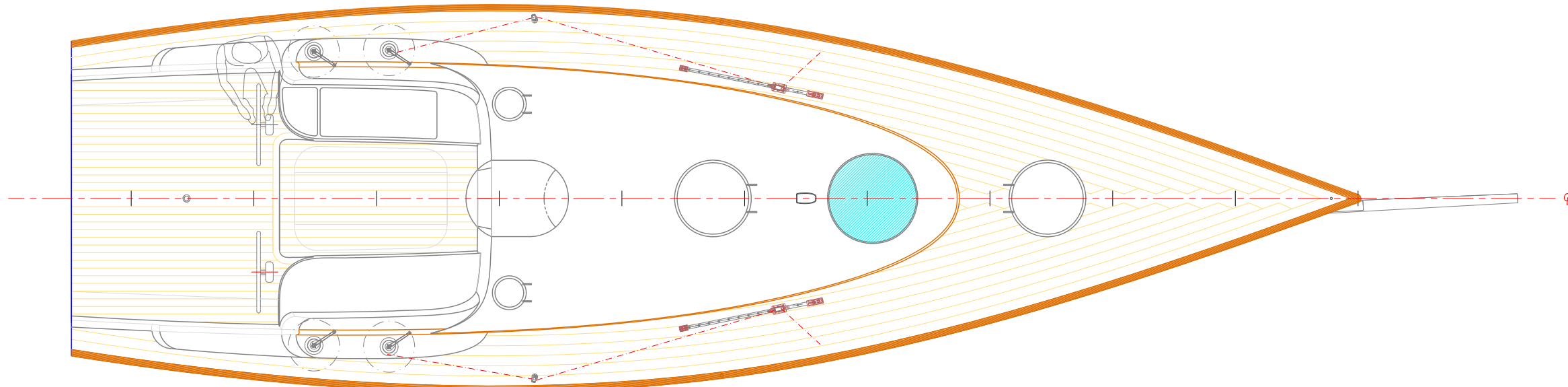


# NUMBERS

LOA	42.0'	12.8 m
LWL	40.5'	12.34 m
BEAM	12.5'	3.8 m
DRAFT (MAX)	8.0'	2.44 m
DRAFT (MIN SAILING)	6.0'	1.83 m
SAIL AREA (MAIN+100% JIB)	1,073 sq.'	100 sq.m
DISPLACEMENT (LIGHT SHIP)	11100 #	5034 kg
DISPLACEMENT (SAILING, 1/2 LOAD)	12,500 #	5669 kg
BALLAST (BULB)	4,100 #	1859 kg
SA/DISP (100%)	32	
DISP/L (LIGHTSHIP)	78	
DISP/L (SAILING)	88	



**RODGER MARTIN DESIGN**  
 BOX 242, NEWPORT TEL 401-848-9850  
 BROAD ISLAND 02883 FAX 401-848-9854

**42' SAILING TENDER**

**INTERIOR COMPOSITE**

SCALE: 1/2" = 1' on 24x36 DATE: 12-22-08  
 DRAWN BY: RW/JR/RM DRG #122 S COMPOSITE

CONFIDENTIAL PROPERTY OF RODGER MARTIN YACHT DESIGN  
 THIS DRAWING MUST NOT BE REPRODUCED OR USED FOR  
 ANY PURPOSE WITHOUT THE DESIGNER'S WRITTEN CONSENT.