

GENERAL NOTES

DRAWING SHOWS THE YACHT IN ITS ORIGINAL CONFIGURATION WITH ALUMINUM SPARS

RIGHTING MOMENT CURVES ARE FOUND ON EXCEL SPREADSHEET "154 GODSPEED RM CURVES.XLS"

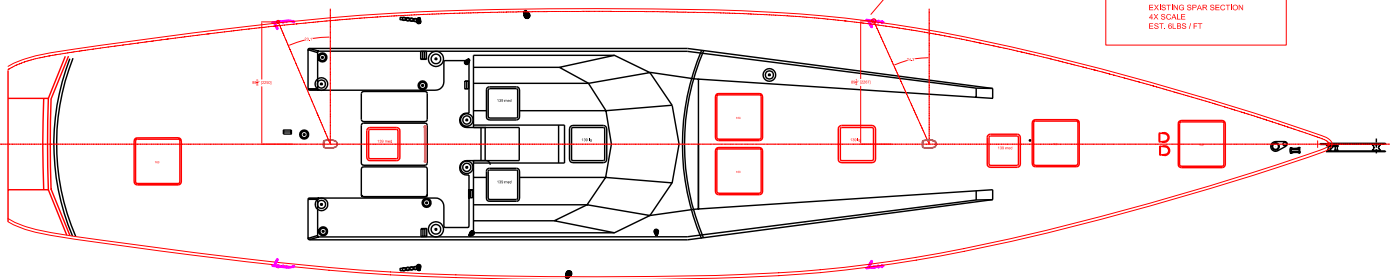
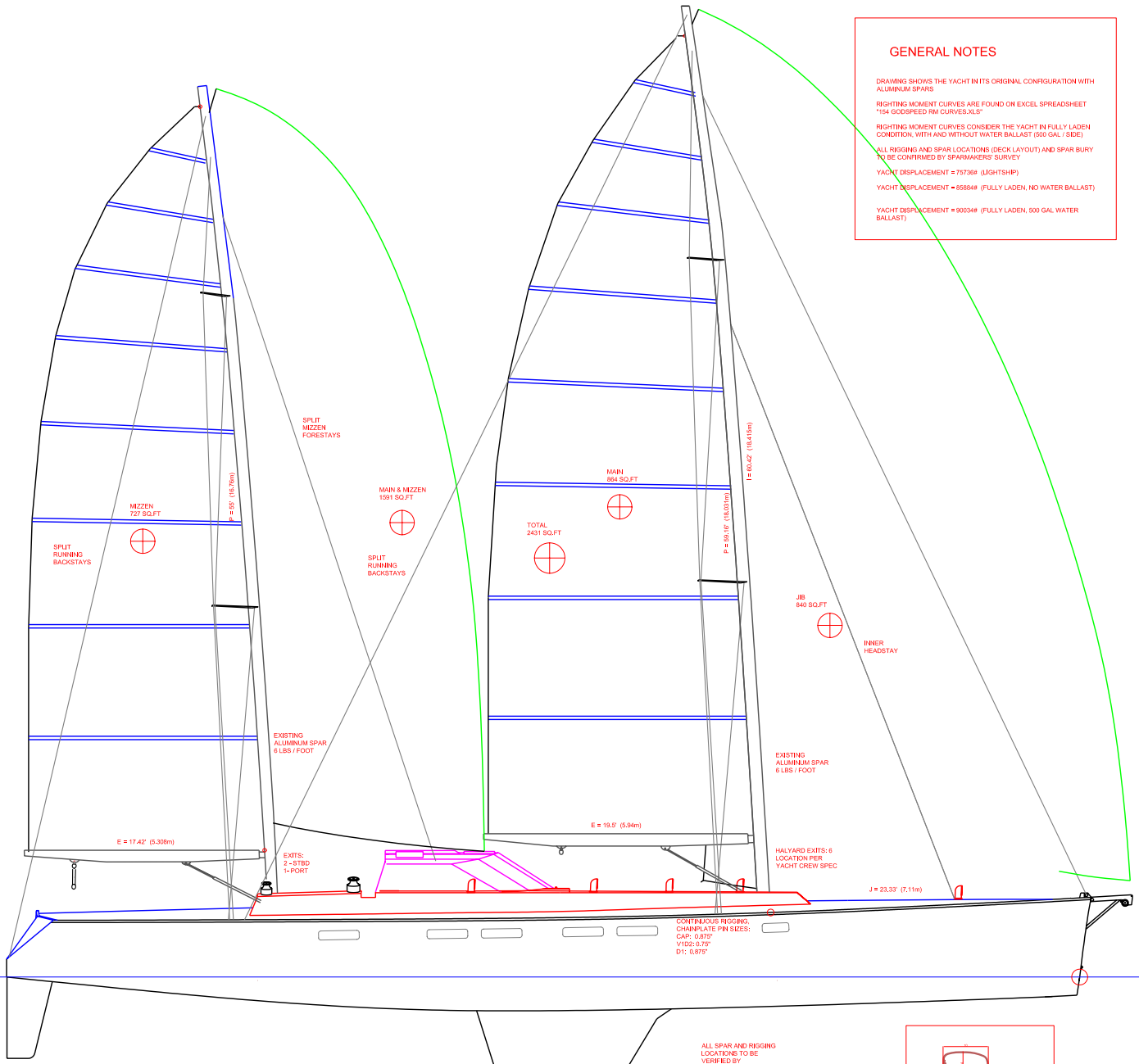
RIGHTING MOMENT CURVES CONSIDER THE YACHT IN FULLY LADEN CONDITION WITH AND WITHOUT WATER BALLAST (500 GAL / 1880L)

ALL RIGGING AND SPAR LOCATIONS (DECK LAYOUT) AND SPAR BURY TO BE CONFIRMED BY SPARMAKERS' SURVEY

YACHT DISPLACEMENT = 75736# (LIGHTSHIP)

YACHT DISPLACEMENT = 85888# (FULLY LADEN, NO WATER BALLAST)

YACHT DISPLACEMENT = 90034# (FULLY LADEN, 500 GAL WATER BALLAST)



DASHEW 80 "GODSPEED"
ORIGINAL CONFIGURATION, ALUMINUM SPARS



POWER MARINE
"GODSPEED"
RIGGING AND SPARS
DESIGNED BY
RIGGING AND SPARS
DESIGNED BY