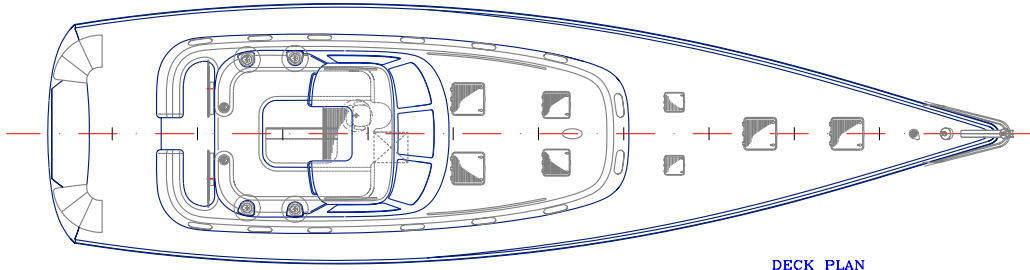
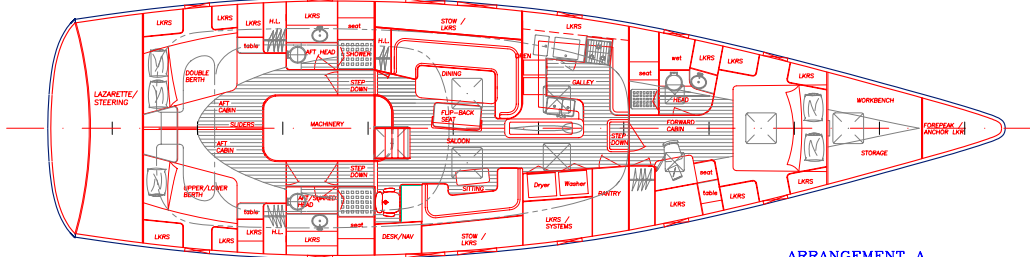


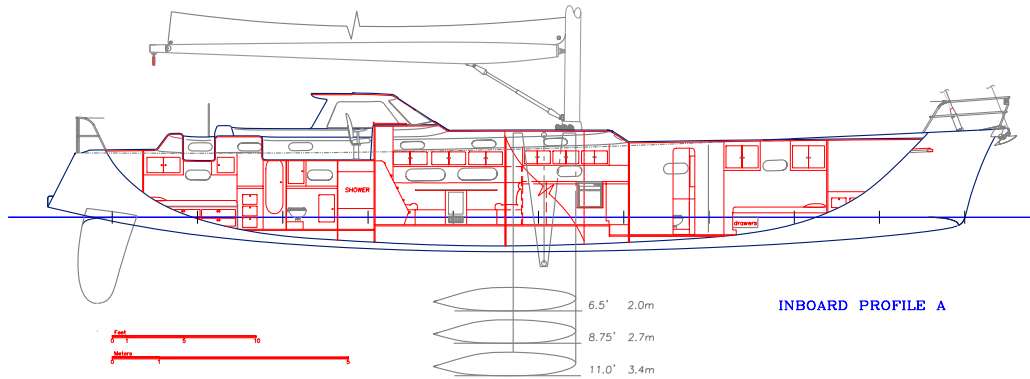
MARTIN 66



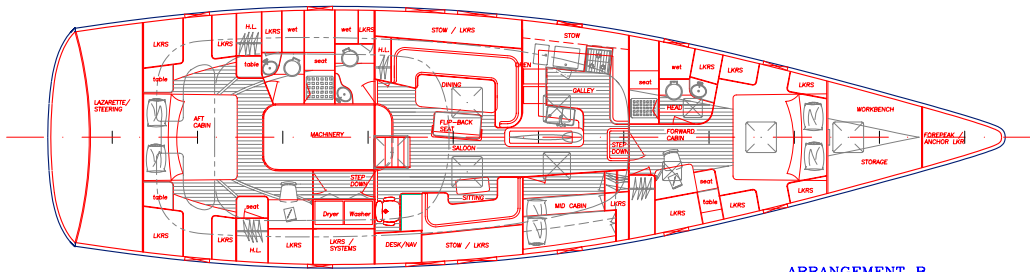
DECK PLAN



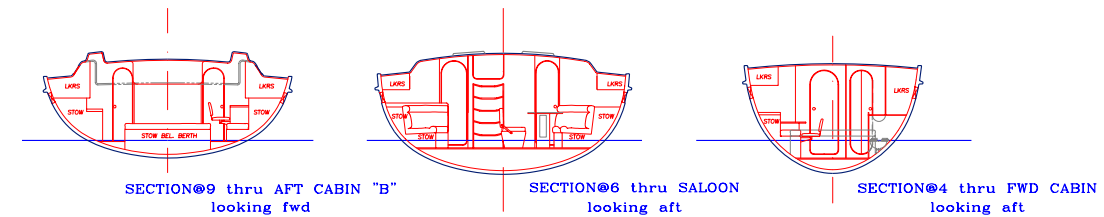
ARRANGEMENT A



INBOARD PROFILE A



ARRANGEMENT B



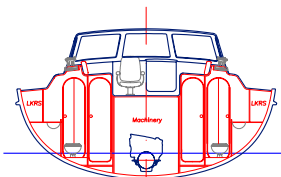
SECTION@9 thru AFT CABIN "B" looking fwd

SECTION@6 thru SALOON looking aft

SECTION@4 thru FWD CABIN looking aft

PARTICULARS

LOA	66'	20 m
LWL	61'	18.6 m
BEAM	18'	5.5 m
DRAFT (keel down)	11'	3.35 m
DRAFT (intermediate)	8.75'	2.67 m
DRAFT (keel up)	6.5'	1.98 m
SAIL AREA (full main & 105% jib)	2190 sq.ft	203 sq.m
DISPLACEMENT (lightship)	41800#	18960 kg
DISPLACEMENT (1/2 load)	52200#	23700 kg
DISPLACEMENT (full load)	57700#	26170 kg
BALLAST (keel & fin)	17360#	7873 kg
SA/DISP (1/2 load cond)	25	
DISP/L (full load cond)	114	
MAIN ENGINE	YANMAR 4HLA - DTP 200 HP	
FUEL (100%)	500 US Gal	1893 l
WATER (100%)	350 US Gal	1325 l



SECTION@8 thru AFT CABIN "A" looking fwd

www.rodgermartindesign.com

RODGER MARTIN DESIGN
 802 342, NEWPORT 802 648 6268 TEL: 401-448-8850

MARTIN 66

PRELIM COMPOSITE PLAN

SCALE: 1/8"=1' DATE: 17 APRIL 2003
 DRAWN BY: R.M./R.W. DWG: 90 PRELIM MK V SAIL